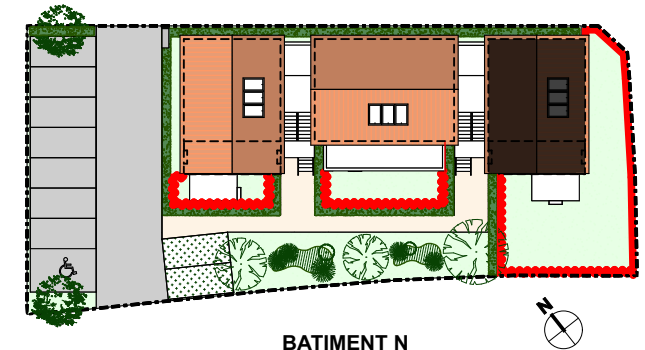
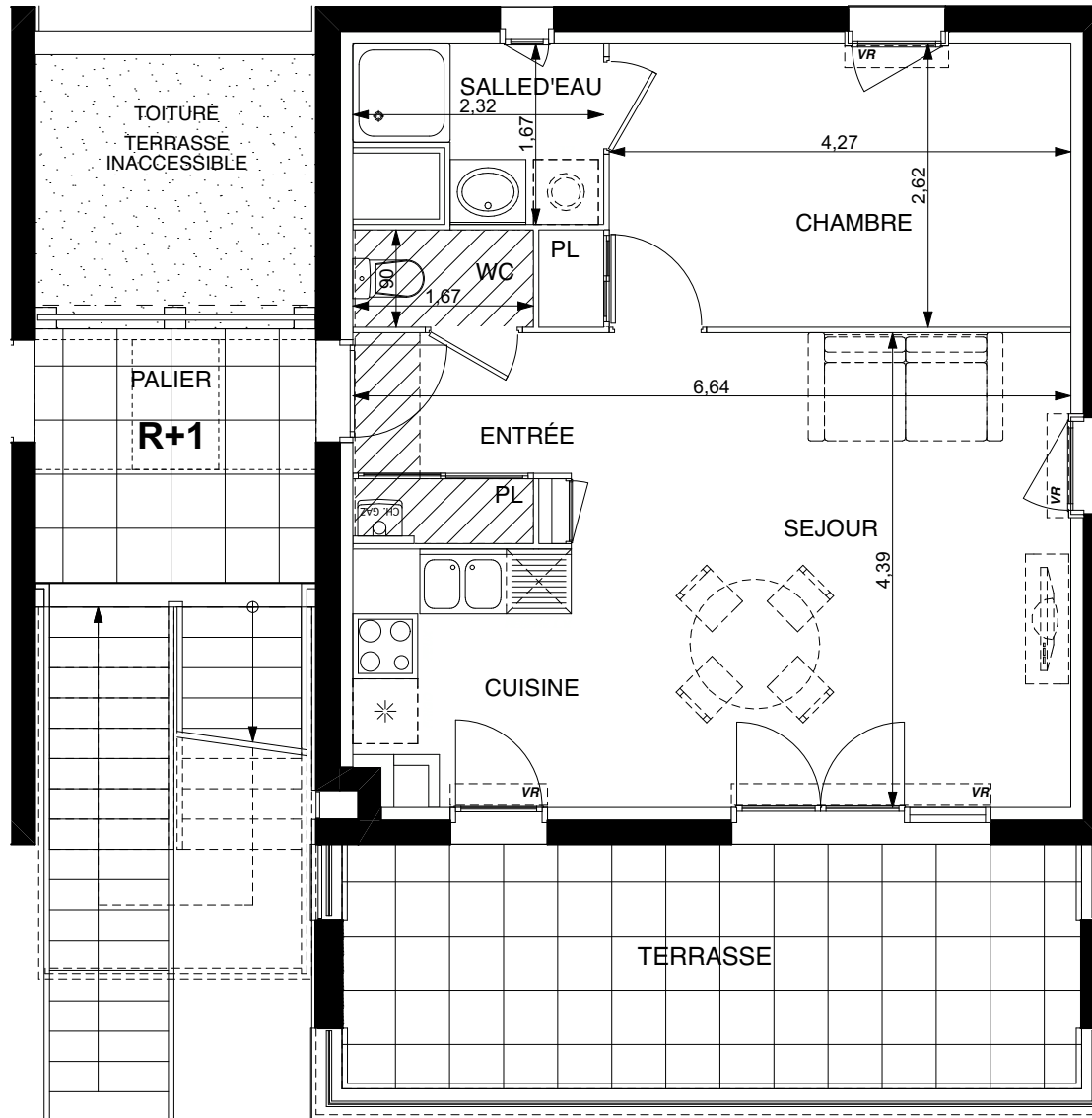


Lieu dit : "Boulbennes des Vitarellés" – 31600 SEYSSES



BATIMENT N

APPT 172 - T2 - ETAGE 1 MACROLLOT 12

ENTRÉE + PL + SÉJOUR + CUISINE	28,30 m ²
CHAMBRE + PL	11,73 m ²
SALLE D'EAU	3,19 m ²
WC	1,51 m ²

TOTAL SURF. HABITABLE **44,73 m²**

TERRASSE 15,46 m²

